

# Welcome in!

1. Get comfortable

2. Take a breath

3. Say hello in  
chat by letting us  
know....



Your name, pronouns, and  
the county or Tribe you're  
representing today



Question: What is your  
internal geography?  
Mountains or ocean?

# Learning Lab Housing Focused Problem Solving

---

July 15, 2025





# Land Acknowledgement

We recognize and acknowledge the First People of this ancestral and unceded territory – the land that today we call California. With respect to their elders, past and present, we recognize the tribal communities as the original stewards of this land, and who continue to lift up their stories and cultures.

We are grateful to have the opportunity to live and work on these ancestral lands. We are dedicated to growing and sustaining relationships with native peoples and local tribal governments.

*Adapted from Los Angeles County's  
Land Acknowledgment*



# Labor Acknowledgement

We recognize and acknowledge the labor upon which our country, state, and institutions are built. We remember that our country was built on the labor of enslaved people who were kidnapped and brought to the US from the African continent and recognize the continued contribution of their survivors.

We also acknowledge all immigrant and indigenous labor, including voluntary, involuntary, trafficked, forced, and undocumented peoples who contributed to the building of the country and continue to serve within our labor force.

We recognize that our country is continuously defined, supported, and built upon by oppressed communities and peoples. We acknowledge labor inequities and the shared responsibility for combatting oppressive systems in our daily work.



# Learning Lab Goals

- Identify solutions to overcome roadblocks in the program and system development process.
- Implement tools and strategies that will expedite your program and system development
- Increase the capacity of you and your staff to improve the equity and efficacy of your system and your programs.

## CHANGE WELL PROJECT

PARTNERING TO STRENGTHEN COMMUNITY SYSTEMS

# Today's Facilitation Team

**Connor Johnson**  
Senior Consultant



**Alynn Gausvik**  
Senior Consultant



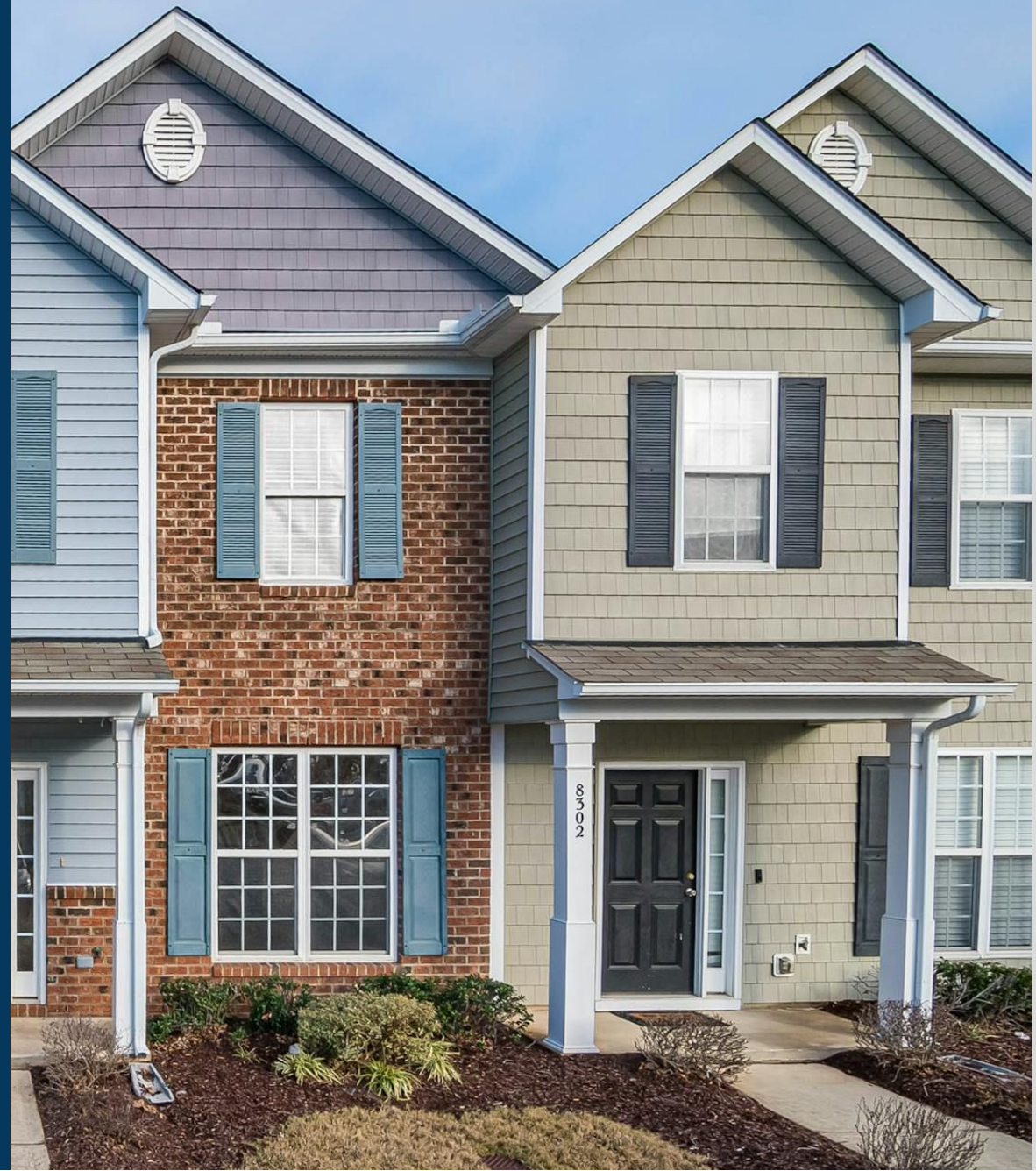
**John Engstrom**  
Senior Consultant





# Agenda

- Review Housing Solutions
- Discuss Future Housing Focused Support
- Housing Problem Solving Discussion





# Question

What is working well in terms of increasing housing options for your program(s)?





# Question

What are some of the challenges related to housing that are coming up in your program(s)?

Learning Lab

# Housing Solutions

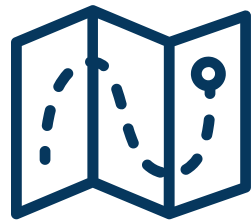


# Housing Solutions

---

- Landlord Engagement
- Shared Housing
- Alternative Housing Solutions

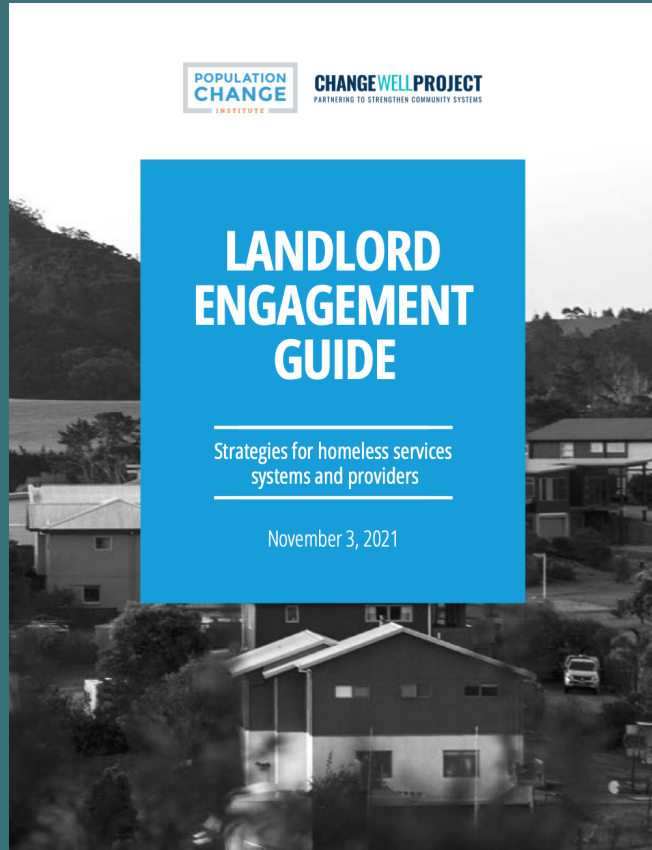




# **LANDLORD ENGAGEMENT**

**Recruiting new landlords and property  
managers and maintaining rapport with  
current ones...**





# Landlord Engagement Toolkit

1. Community Wide System Work on Landlord Engagement
2. Implementation Strategies for Landlord Engagement
3. Resources and Reference Links

# 6 Tips For Building Relationships with Landlords



Clear and  
Consistent  
Communication



Financial  
Protections  
& Incentives



Ongoing  
Tenant and  
Landlord  
Support



Tenant  
Screening &  
Preparation



Accountability  
&  
Follow-Through



Engagement  
&  
Recognition

---



## Incentives

### Monetary Incentives

Double security deposit *(but check new state law)*

Sign-on bonus for each 1-year lease  
rental subsidy  
(guaranteed rent)

Holding Fees

Risk mitigation funds

### Program Support

Support and ability to mediate issues

Responsiveness: regular check-ins

Training for participants

Assistance to participants during the move in process

Ability to move someone to prevent eviction if a housing situation just isn't working.

24-hr emergency #

### Community Support

Relationship Building

Collective Initiative

Supporting initiatives that help the community

Reshape Community

## Landlord Retention



- Tenant Centered Housing Plans
- Home visits
- Pay rent on time
- Hands on support
- Be available
- Create peaceful transitions
- Do not relocate unless necessary
- Be prepared with new tenants
- Eviction Prevention (emphasis on prevention)
- ***Appreciation!***

- Bridge Communication
- Timely response
- Clear explanation of services and program vision
- Let them know when you are not available (out of office)
- Program cell phone
- Frequent check ins w/landlord
- ***Appreciation!***

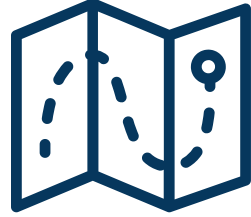
- Good tenancy and neighbor skills
- Involve the landlord in resolution where appropriate
- Maintain Communication
- Customer Service
- Program Contact sheets
- Accompany participant during lease signing
- Ensure rental payments after program
- ***Appreciation!***



## Discussion

What is working for your community with landlord engagement?

Please share any tips!



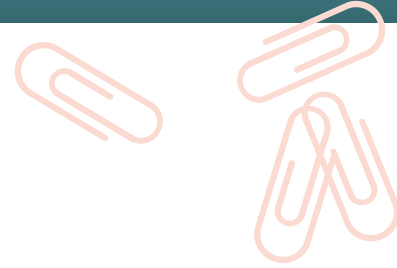
# SHARED HOUSING

**Two or more people sharing housing. Each person has their own room, with shared common areas..... Roommates!**



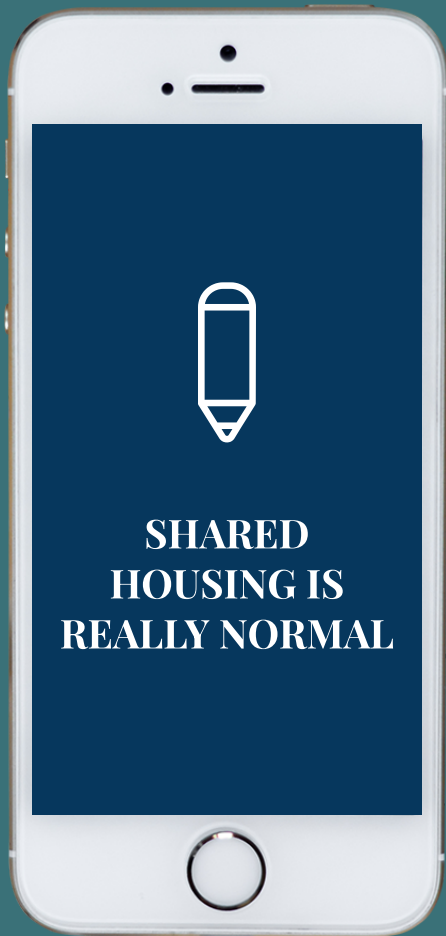


## Shared Housing is NOT a program



Any situation in which an agreement formalizes the co-residence of two or more family units within the same housing unit.

- It is a type of housing
- Shared Housing helps participants be another neighbor in the neighborhood
- It is a normal way for most of us to live

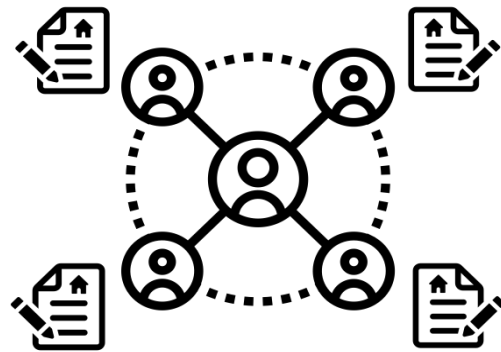


## **TYPES OF SHARED HOUSING**

- Room for rent in an established house or apartment
- Available units on the market
- Affordable housing units
- Host homes
- Services Trade with childcare or senior care



# What's **Required** for Best Practice?



Each *household* has  
their **own lease**



Each household  
must be **willing**  
**to participate**



Each household  
must **decide who**  
**they live with**

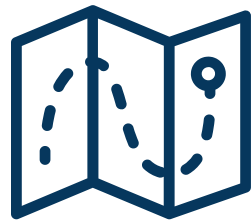
## Discussion

Are any programs currently offering participants the option of shared housing?

Please Share!

How is it going? What are some barriers?





# **ALTERNATIVE HOUSING SOLUTIONS**

**Getting creative with how we find sustainable  
housing for participants...**



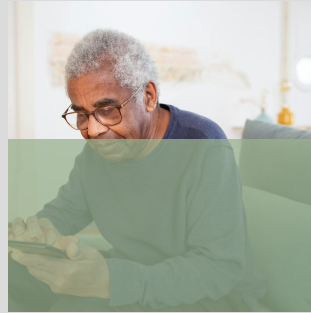
# ASSESSING FOR OTHER HOUSING

---



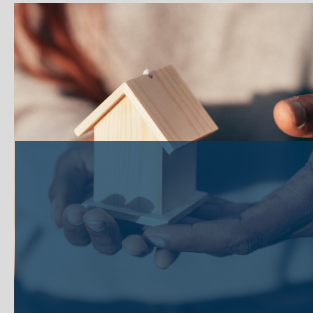
## Veteran?

Does the participant qualify for Veteran services?



## Senior Housing?

Can we get participants on Senior waitlists?



## Mental Health Needs?

Does our participant have mental health support needs that could qualify for housing?



## Affordable Units Opening?

Are there any new buildings coming online in area?





## When options are limited...

If we have tried everything, but participant is still unhoused...



### Reframe

We may need to work with the participant to reframe expectations of the housing search and discuss what is realistic in the area.



### Reconnect

In some situations there may be an opportunity to reconnect with family or support networks who might be able to share housing.



### Relocate

There may be a more affordable place to relocate to for some participants who have connections to less expensive rental markets.

## Discussion

What are some alternative housing solutions that have worked for your program(s)?

*Please type in the chat or raise your hand to share!*

Learning Lab

# Future Housing Support



## Discussion Questions

- What housing support technical assistance would you like to see?
- Where do you need more support, information, big ideas and support with a housing vision?

# Housing Problem Solving Discussion

A low-angle photograph of a modern multi-story apartment building. The building features a mix of white, teal, and brown wood-clad sections. The upper floors have balconies with glass railings. The sky is clear and blue.

# Housing Problem Solving

- Share Name, County/Tribe, Program(s)
- What is a housing challenge that is coming up. Please share high-level housing issues.



# Get in Touch!

**CHANGE  
WELL  
PROJECT**

PARTNERING TO STRENGTHEN COMMUNITY SYSTEMS

**Website:**

[www.changewellproject.com](http://www.changewellproject.com)

**Request Technical Assistance:**

<https://www.changewellproject.com/request-technical-assistance>

**Learn more about our work:**

<https://www.changewellproject.com/our-activities-report>